

# How to Add Dependents to Your FlexCare Account

## » How To Add Dependents Through The Web Portal



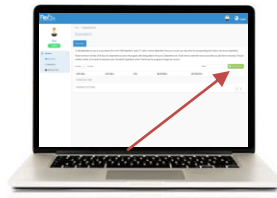
Visit [MyFlexCare.com](https://MyFlexCare.com) and click on "Member Portal"



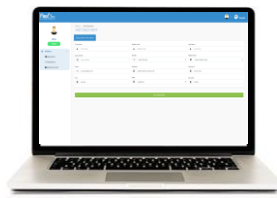
Input your **Username & Password**; then click "Login". *Note: You must register yourself before you can add your dependents.*



Click "Dependents" on the left navigation bar to add your dependents.



On the Dependents page, click green "Add Dependent" tab.

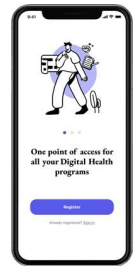


Input your dependent's **First Name, Last Name, Date of Birth, Gender & Relationship**, click "Save Information".

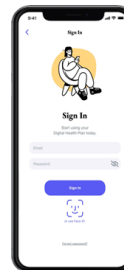
## » How To Add Dependents Through The FlexCare Digital Health App



Get the **FlexCare Digital Health** app in the App Store or Google Play Store.



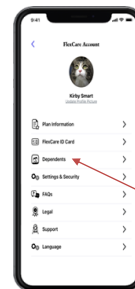
Beside **Already Registered?** Click "Sign In"



Input your **Username & Password**; then click "Login". *Note: You must register yourself before you can add your dependents.*



In the upper right corner, click "Account" icon.

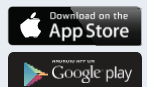


Click on "Dependents", then "Add New Dependent" and input the required information.

After adding dependents, those over 18 will need to follow the HOW TO REGISTER member instructions to create their own account (member number is the same for everyone in your household). Dependents under 18 will access FlexCare through your account.

**Register your dependents today so they can access care when they need it.**

Don't have your FlexCare member ID?  
Email: [support@myflexcare.com](mailto:support@myflexcare.com) to obtain your member ID



[MyFlexCare.com](https://MyFlexCare.com)